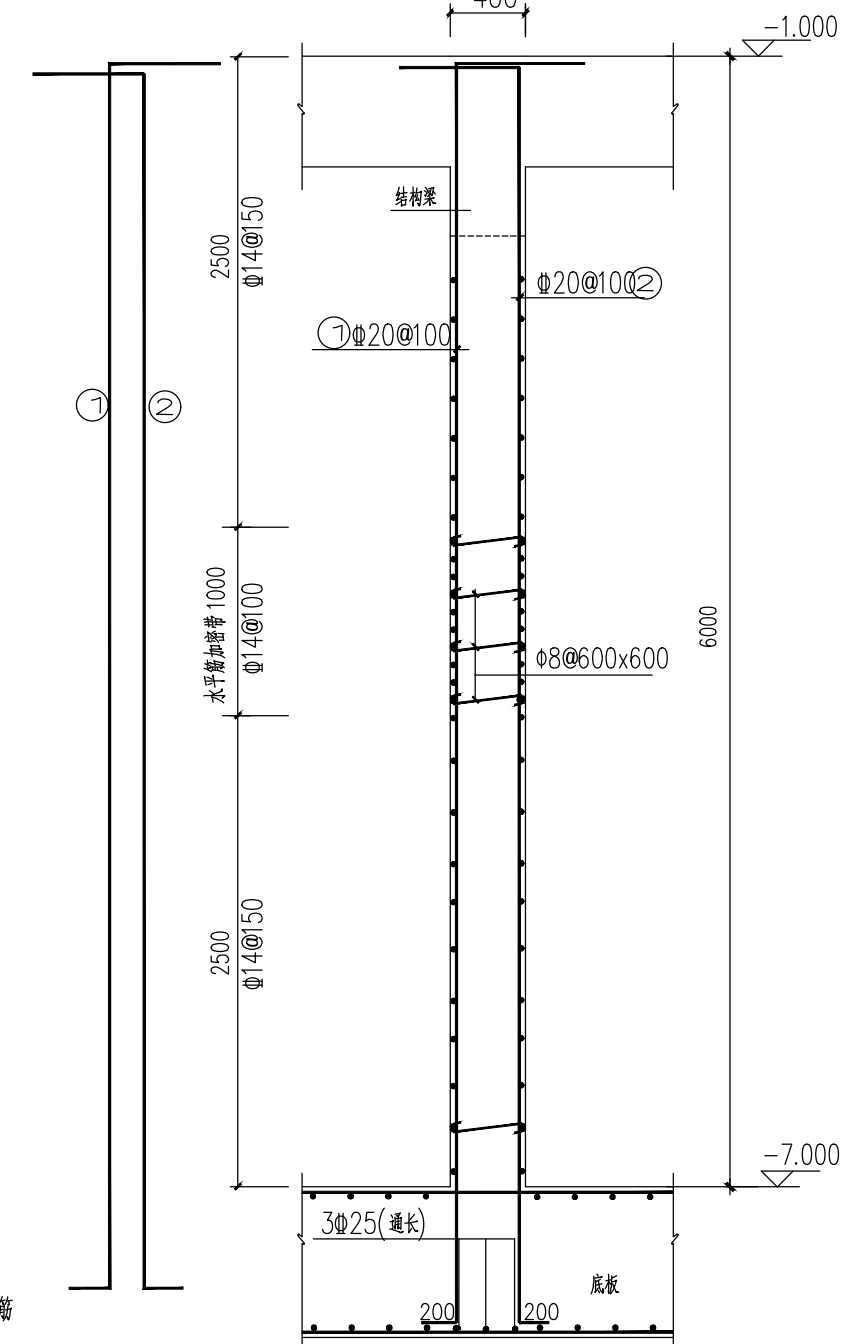


Structural drawing of a vertical wall section. The wall is 400mm wide and 6000mm high. It features horizontal reinforcement bars at 1000mm intervals ( $\Phi 14@100$ ) and vertical reinforcement bars at 100mm intervals ( $\Phi 20@100$ ). A horizontal section line 1-1 is indicated. The base of the wall is 800mm thick and contains 3 $\Phi 25$  reinforcement bars (通长). The drawing also shows a structural beam (结构梁) and a foundation (底板). Elevation markers are at -1.000 and -7.000.

地下室外墙1—1剖面



地下室外墙2-2剖面

[illegible]